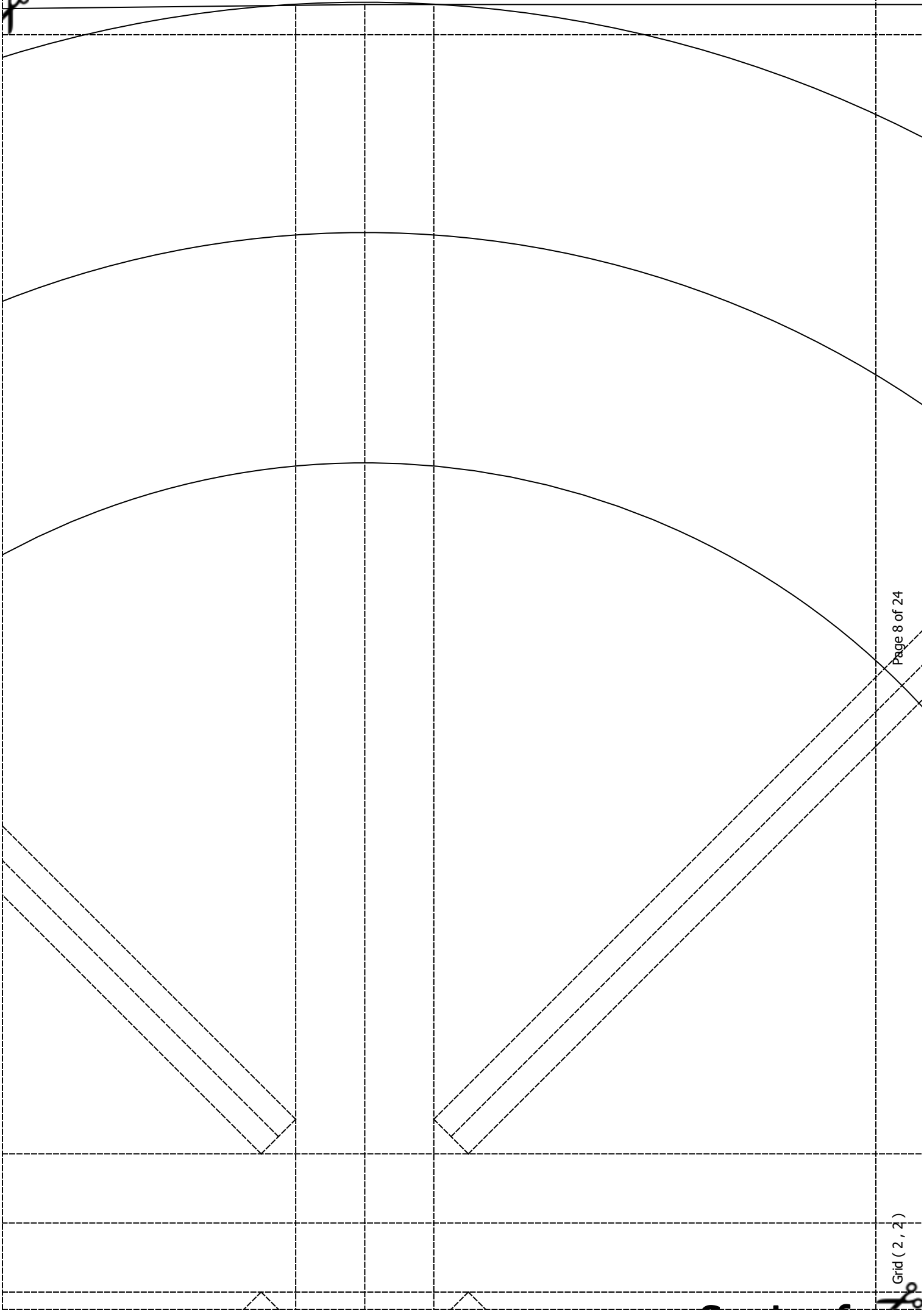


**Bottom**  
Cut 2x from Fabric  
Cut 2x from Interfacing  
**Without Seam Allowance**  
Inner Circle= Size Small= 33x39  
Middle Circle= Size Medium = 43x49  
Outer Circle = Size Large= 53x59







--	--	--	--	--	--











# Sewing for your Life

## Free Pattern

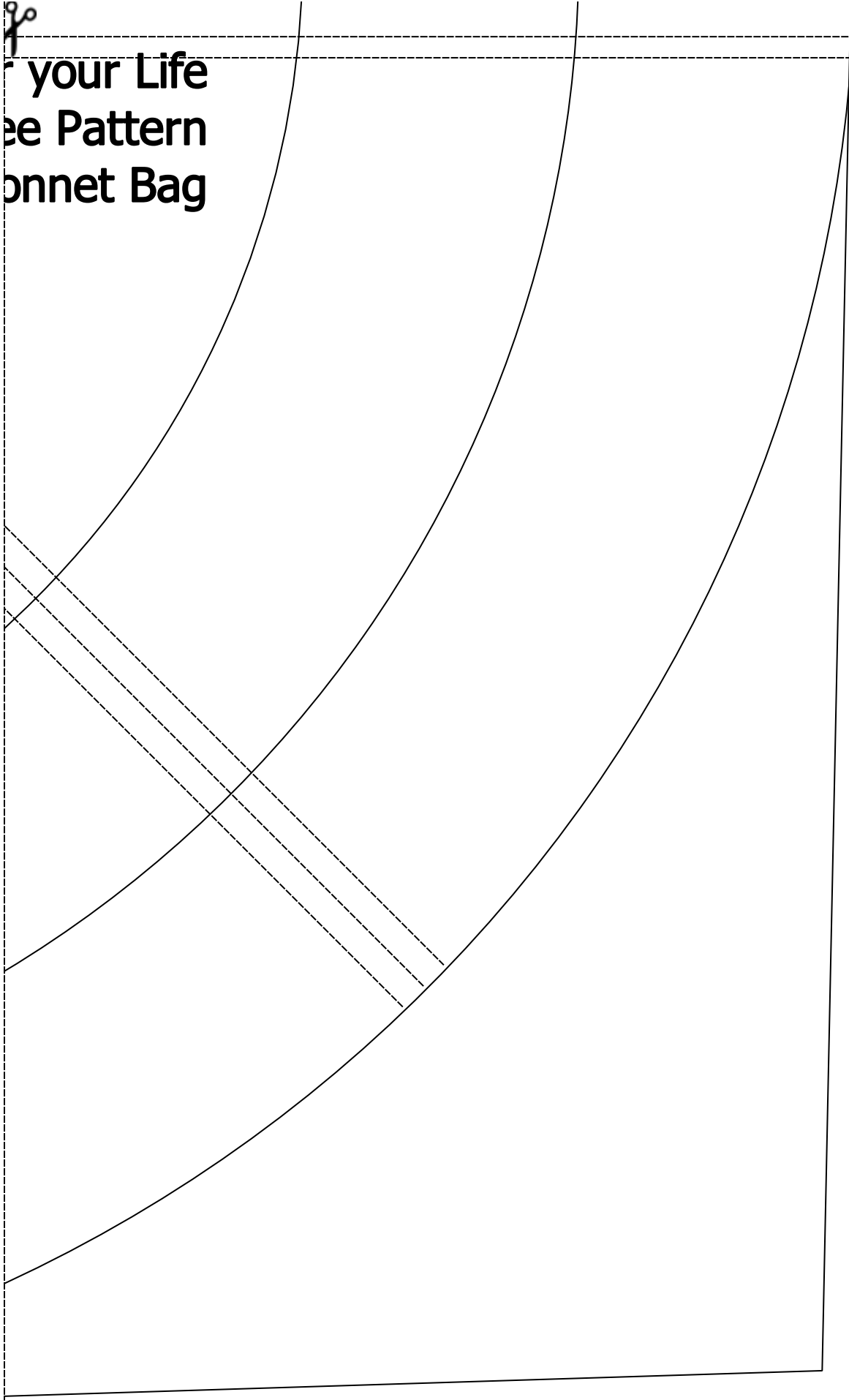
### Bonnet Bag

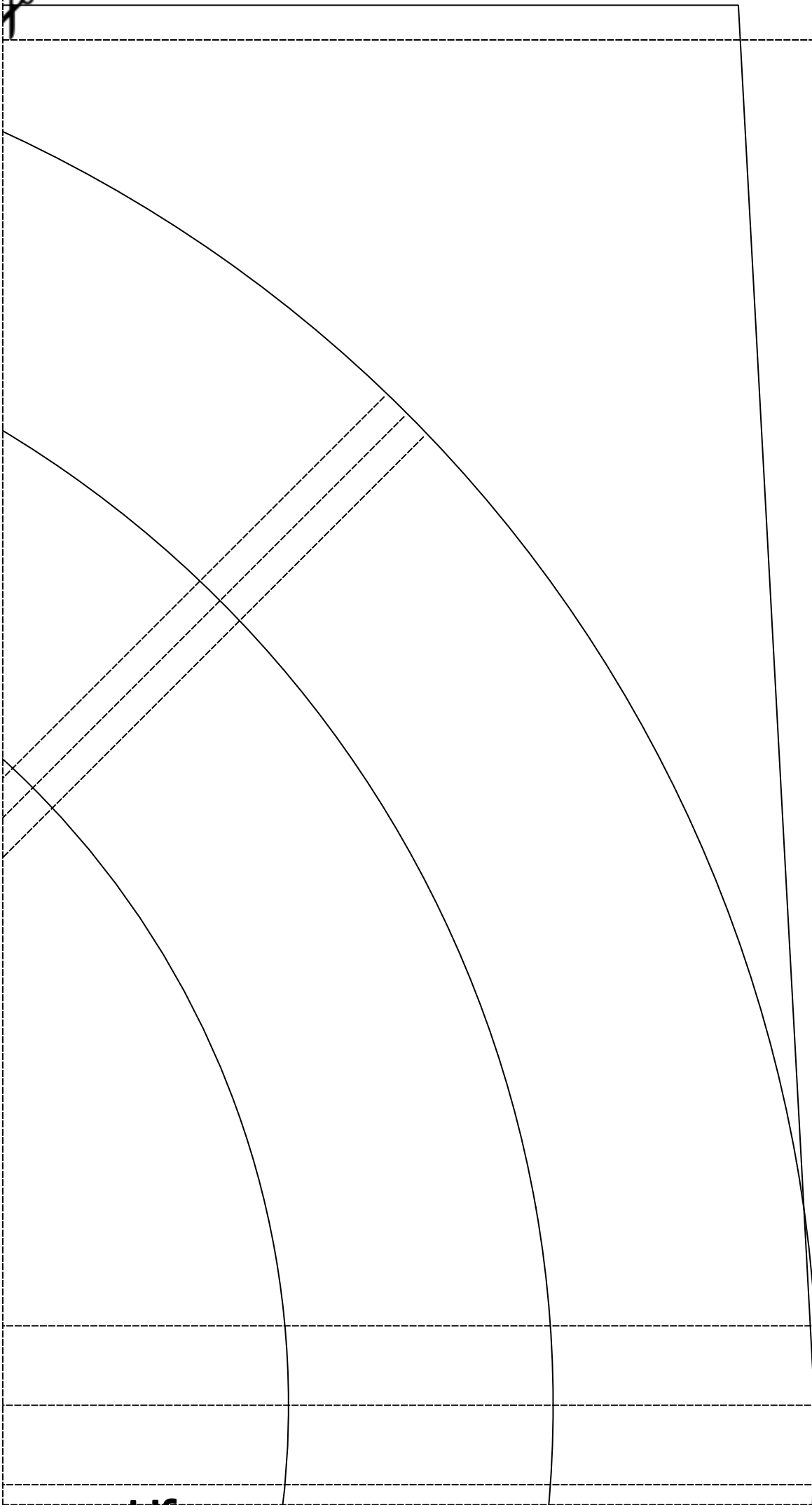






# your Life e Pattern onnet Bag





1.12





--	--	--	--	--	--	--	--	--	--









Size

59x5

Size Me

49x4

Size

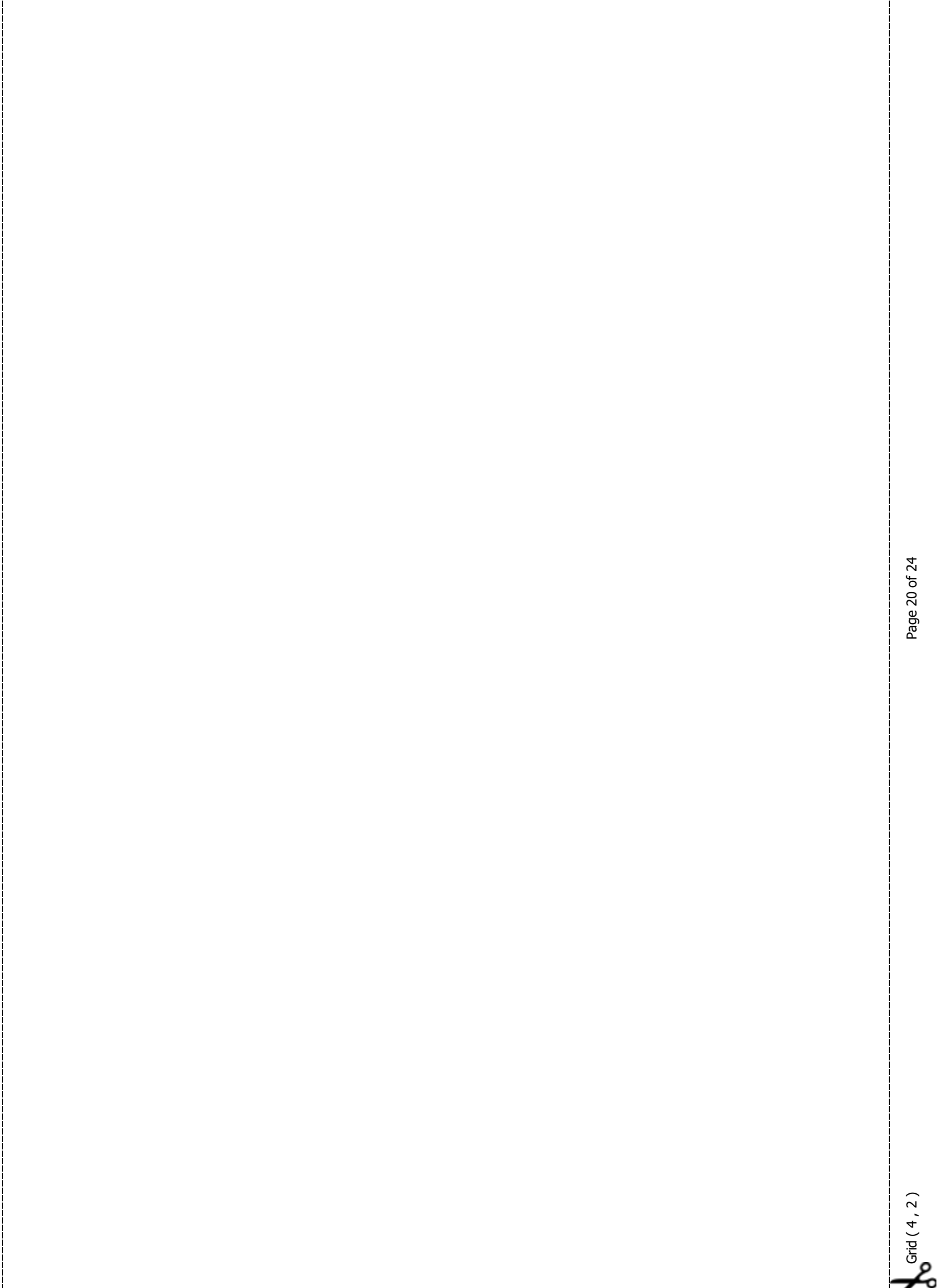
39x3

**Cut 2x from F  
Without Seam Allow**











--	--	--	--





--	--	--	--



Large  
x53 cm  
Medium  
x43 cm  
Small  
x33 cm  
**Fabric  
wance**





e Large

--	--	--